

MONTANA



ST. MARY & MILK RIVERS
WATER MANAGEMENT INITIATIVE



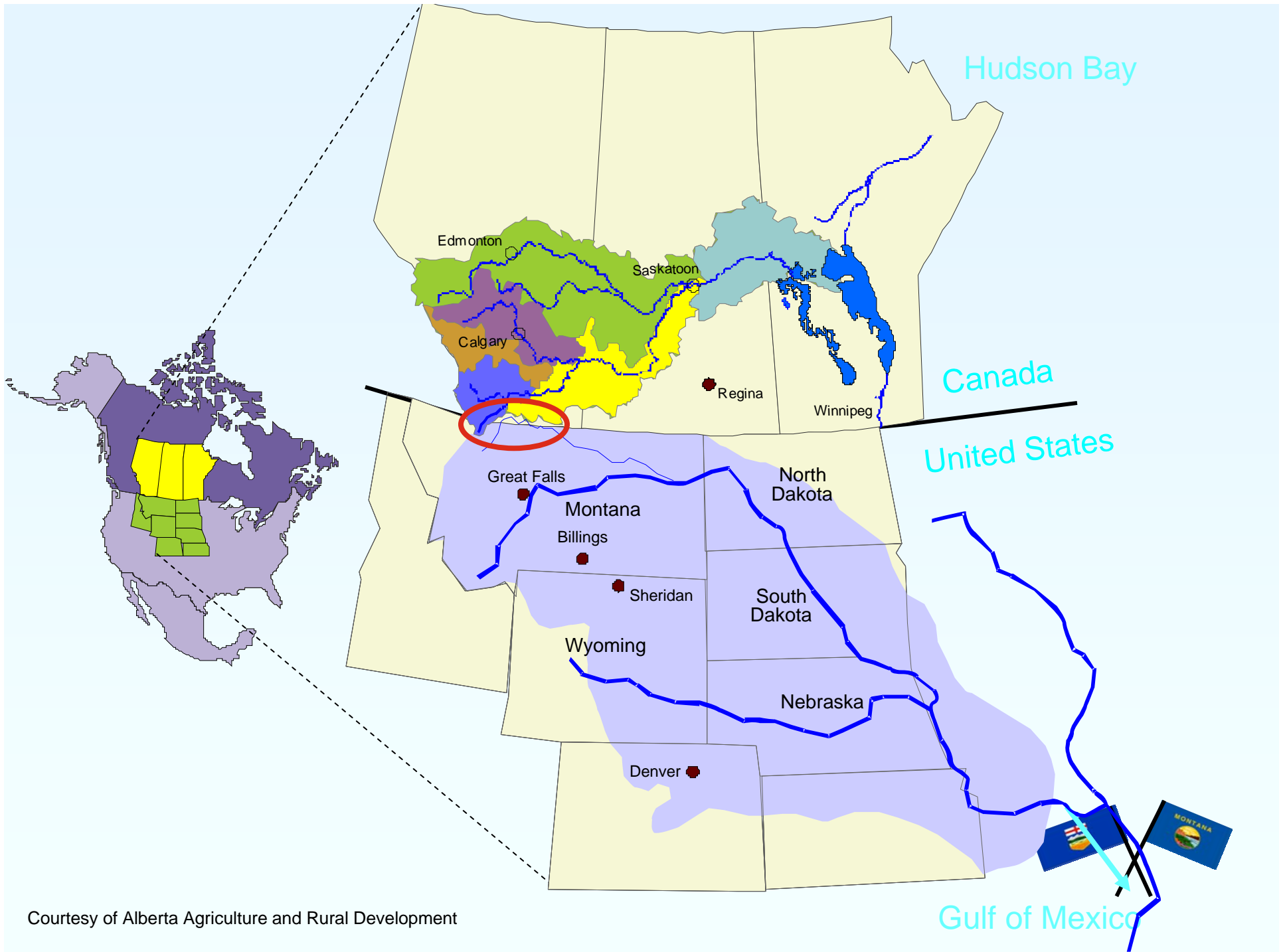
ALBERTA



Purpose

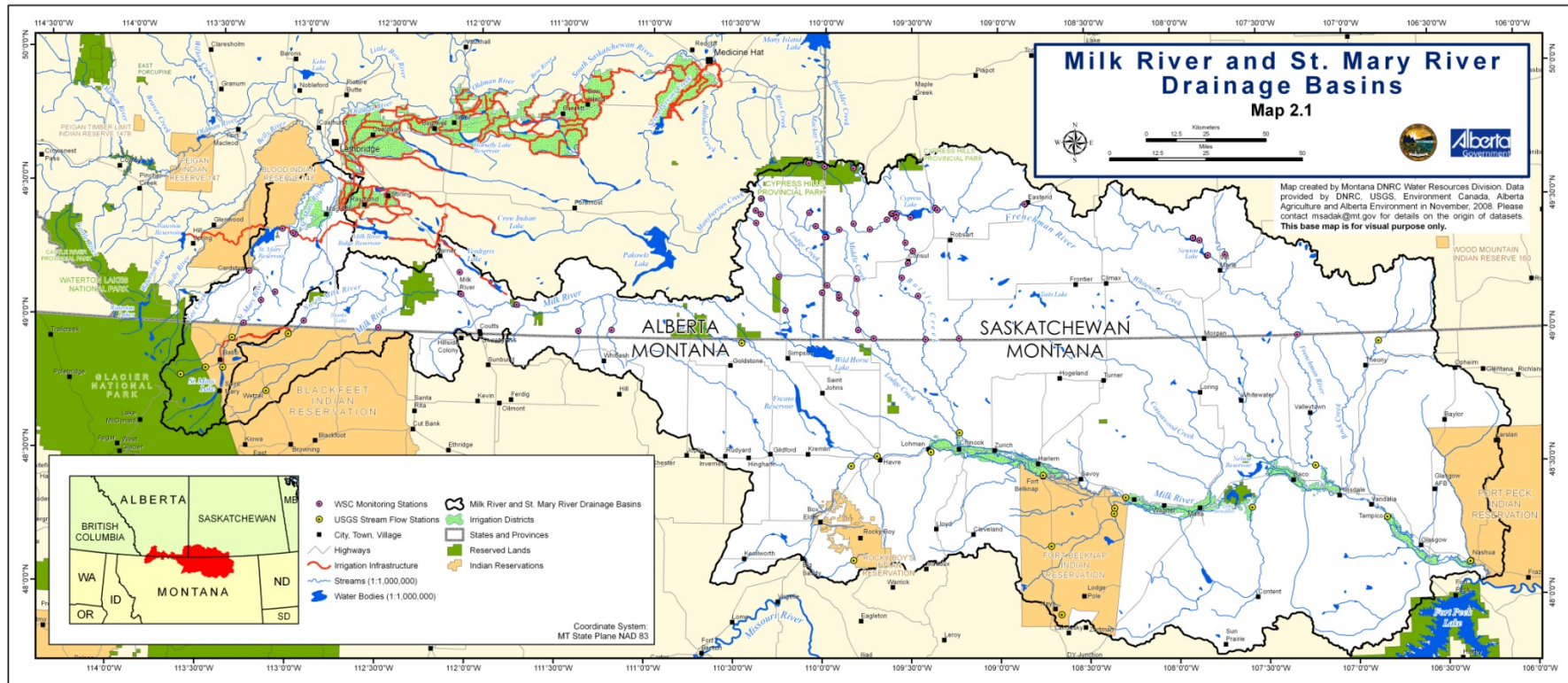
- 💧 To explore and evaluate options for improving both Montana's and Alberta's access to the shared water of the St. Mary and Milk Rivers.
- 💧 Make joint recommendation(s) on preferred options to both governments for their consideration and approval.



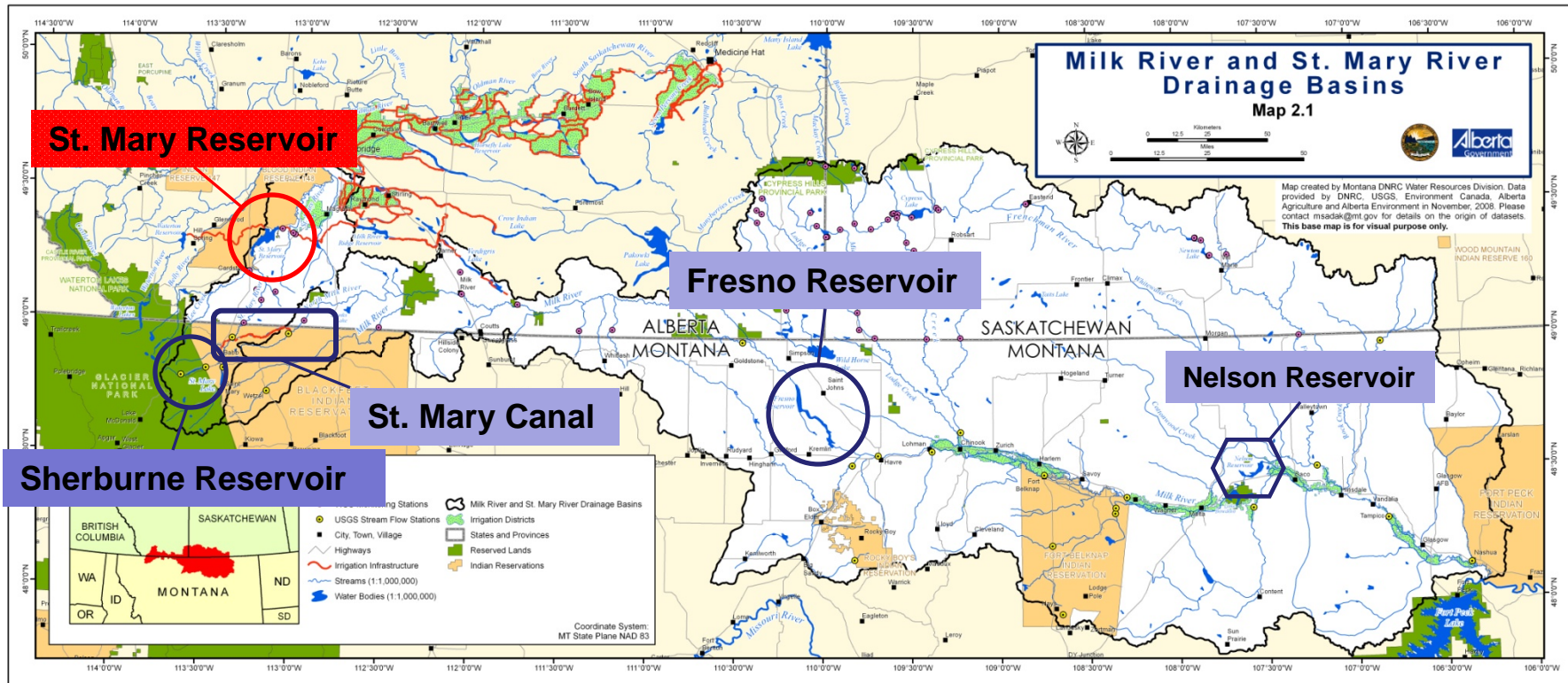


Courtesy of Alberta Agriculture and Rural Development

St. Mary and Milk River Watersheds



Basin Water Resource Infrastructure





St. Mary Diversion Dam

St. Mary Canal Headgates



U.S. St. Mary River Siphon







U.S. St. Mary Canal





North Fork Milk River

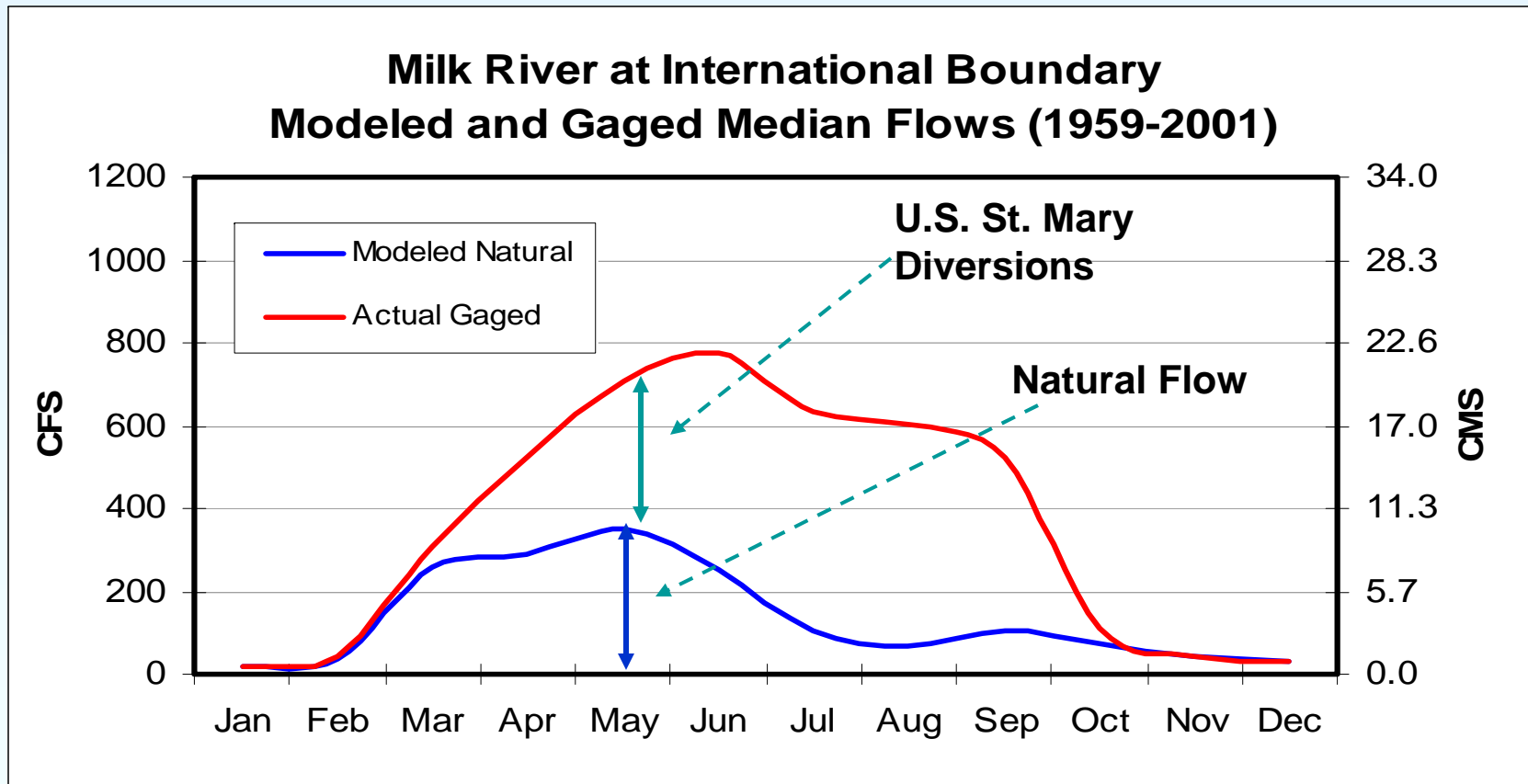




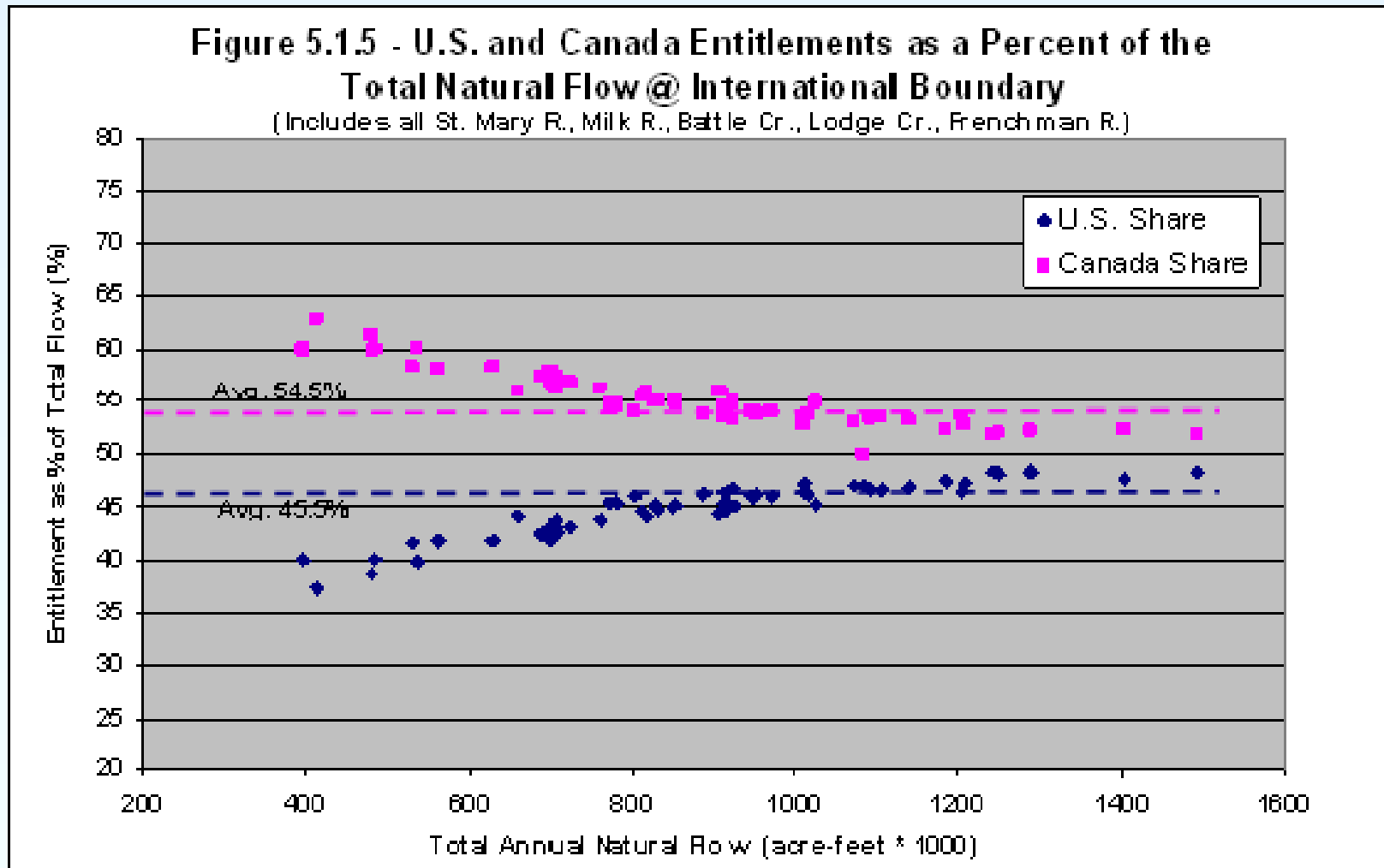
Milk River at Eastern Crossing



Milk River at Milk River To Eastern Crossing



Impact of October 1921 Order - total flow @ Int. Boundary.



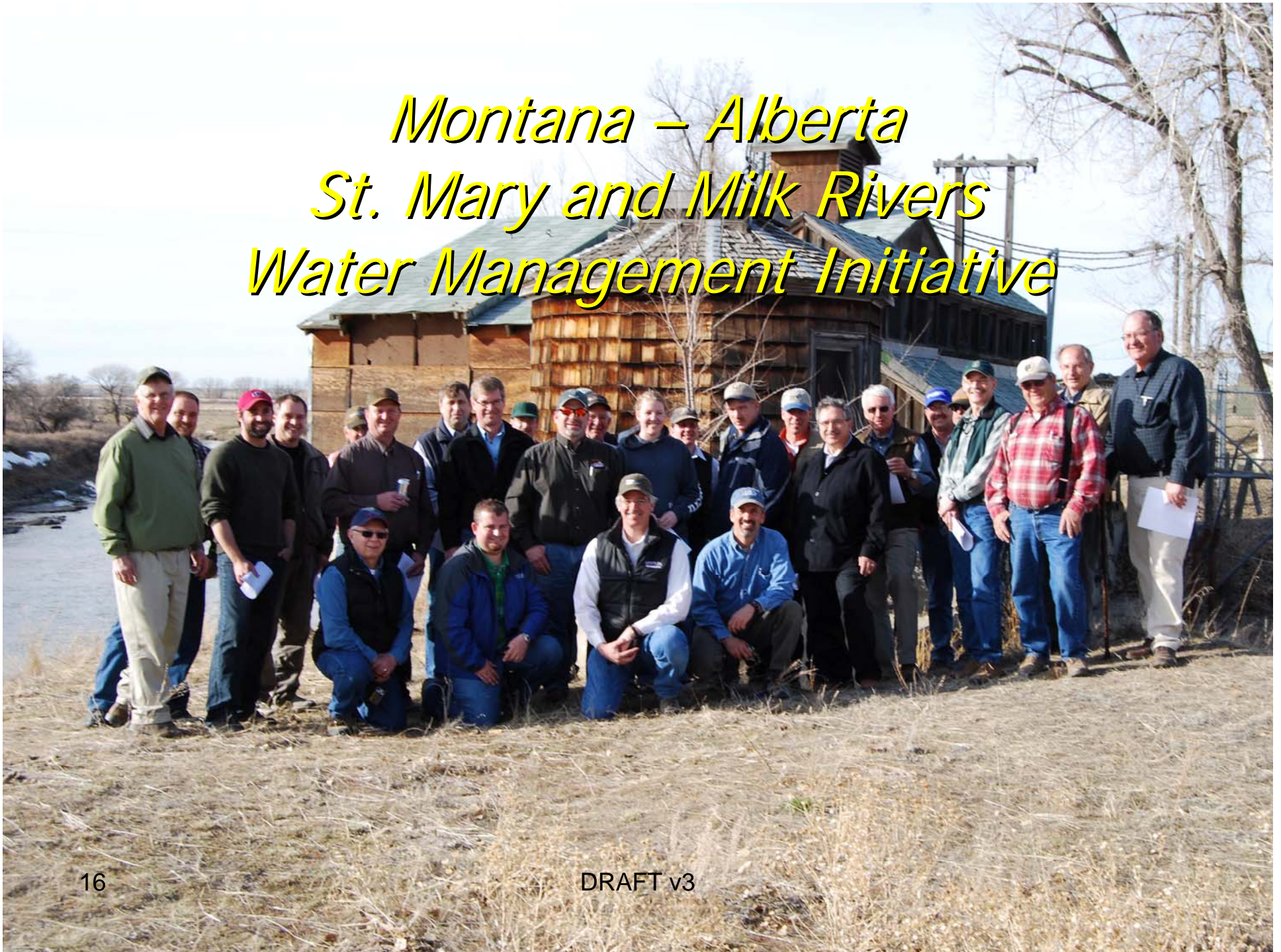
Montana Joint Initiative Team

MEMBER	ORGANIZATION
Anne Yates	Co-chair - DNRC
Dustin de Yong	Office of the Lt. Governor
Randy Reed	Irrigator, Milk River basin
Don Wilson	Blackfeet Tribe
Dave Peterson	City of Havre
Harold "Jiggs" Main	Ft. Belknap Indian Community
Paul Azevedo	Secretariat - DNRC

Alberta Joint Initiative Team

MEMBER	ORGANIZATION
Robert Harrison	Alberta Environment – Co-chair
Brent Paterson	Alberta Agriculture and Rural Development
Tom Gilchrist	Milk River Watershed Council Canada
Ken Miller	Milk River Watershed Council Canada
Duncan Lloyd	Member-at-large, Oldman Watershed
Gerald Perry	Producer, St. Mary River Irrigation Project
Tim Toth	Secretariat, Alberta Environment

*Montana – Alberta
St. Mary and Milk Rivers
Water Management Initiative*



St. Mary Reservoir Alberta



St. Mary – Jensen Canal



QUESTIONS

💧 http://www.dnrc.mt.gov/wrd/water_mgmt/planning_activities/montana-alberta/default.asp

