



RESPONSE TO AN INQUIRY REGARDING AIR AMBULANCE DATA FOR THE STATE OF MONTANA

The Montana Department of Labor has requested data on air ambulance charges. The following is NCCI's response.

Response

Air ambulance charges are reported under procedure codes A0430, A0431, A0435, and A0436, which are defined as follows:

- A0430 - Ambulance service, conventional air services, transport one way (fixed wing)
- A0431 - Ambulance service, conventional air services, transport one way (rotary wing)
- A0435 - Fixed wing air mileage, per statute mile
- A0436 - Rotary wing air mileage, per statute mile

Charts 1 and 2 below display the share of payments, share of units¹, and share of transactions by procedure code in Montana based on total payments, total units, and total transactions for A0430, A0431, A0435, and A0436 from the NCCI Medical Data Call.

- The share of payments for procedure codes A0430, A0431, A0435, and A0436 of total medical payments in Montana is 0.9%.
- The regional share of payments, share of units, and share of transactions by procedure code are based on total payments, total units, and total transactions reported for A0430, A0431, A0435, and A0436 from the NCCI Medical Data Call for the states of CO, ID, NE, NV, OR, SD, and UT.
- The share of payments for procedure codes A0430, A0431, A0435, and A0436 of total medical payments in the region is 0.6%.
- The countrywide (CW) share of payments, share of units, and share of transactions by procedure code are based on total payments, total units, and total transactions reported for A0430, A0431, A0435, and A0436 from the NCCI Medical Data Call for the states of AK, AL, AR, AZ, CO, CT, DC, FL, GA, HI, IA, ID, IL, IN, KS, KY, LA, MD, ME, MO, MS, MT, NC, NE, NH, NM, NV, OK, OR, RI, SC, SD, TN, UT, VA, VT, and WV.
- The share of countrywide payments for procedure codes A0430, A0431, A0435, and A0436 as a percent of total countrywide medical payments is 0.5%.

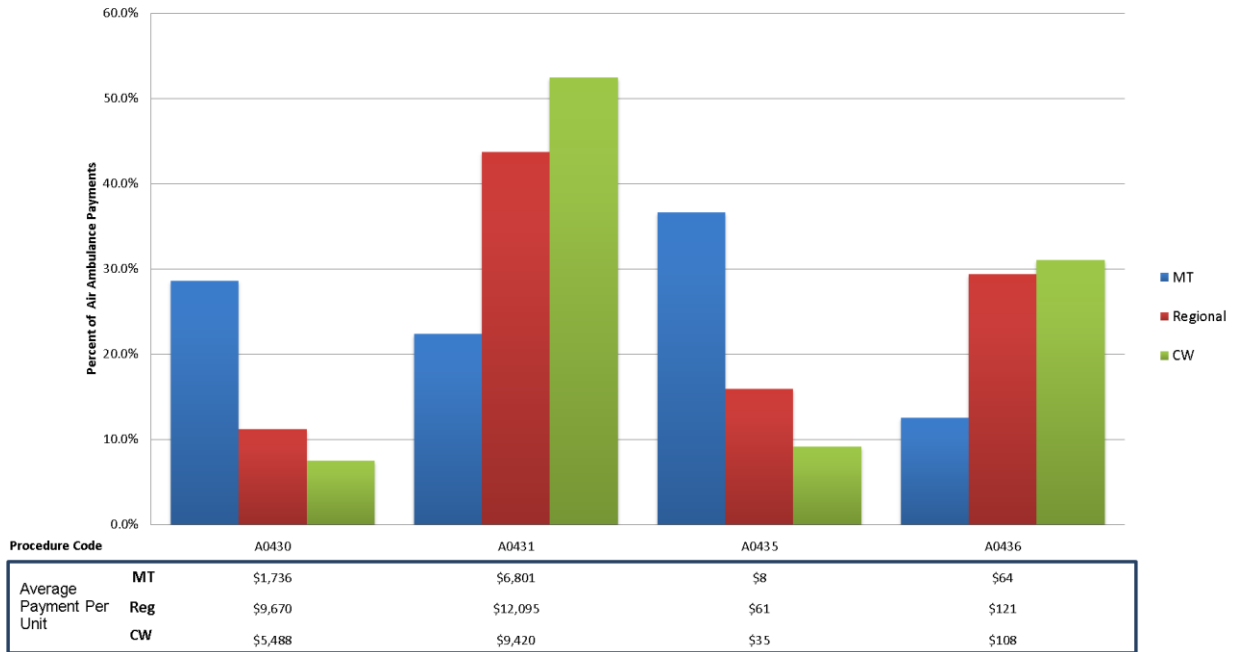
¹ A unit for air ambulance codes is either a single one way trip (Codes A0430 and A0431) or a mile traveled (codes A0435 and A0436).



RESPONSE TO AN INQUIRY REGARDING AIR AMBULANCE DATA FOR THE STATE OF MONTANA

Chart 1

Payments for A0430, A0431, A0435, and A0436



Source: NCCI Medical Data Call, Service Year 2013. Region includes CO, ID, NE, NV, OR, SD, and UT. Countrywide includes data for the following states: AK, AL, AR, AZ, CO, CT, DC, FL, GA, HI, IA, IL, IN, KS, KY, LA, MD, ME, MO, MS, MT, NC, NE, NH, NM, NV, OK, OR, RI, SC, SD, TN, UT, VA, VT, and WV.

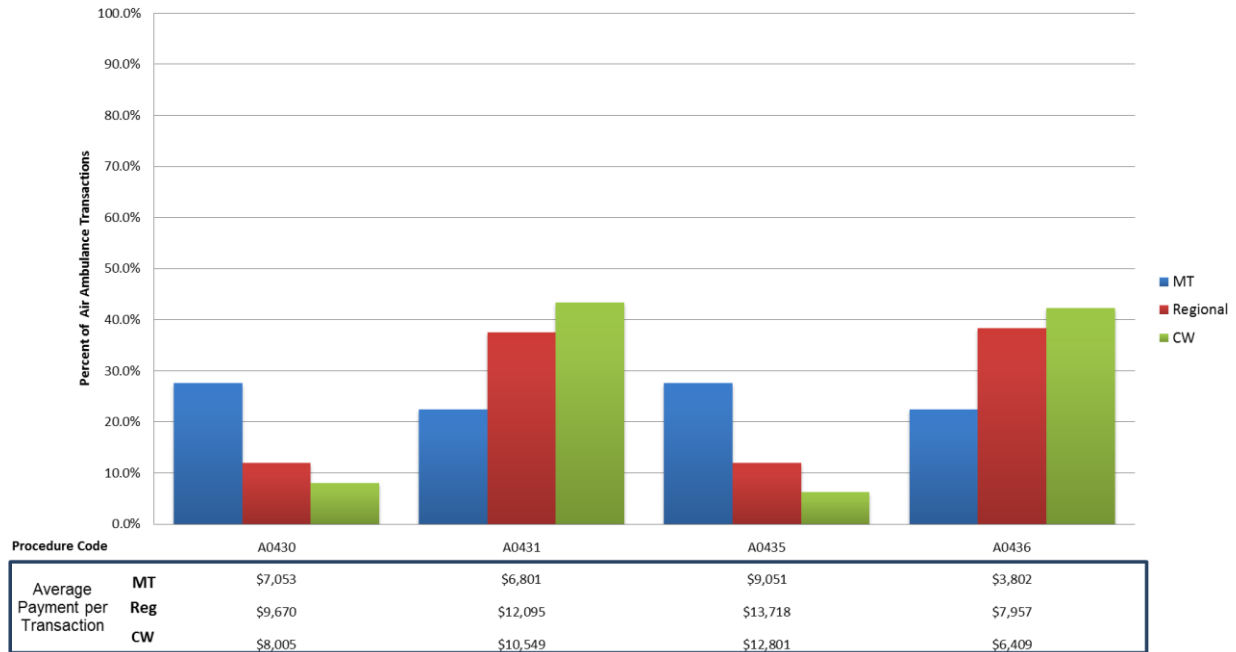
Code	Description
A0430	Ambulance service conventional air services transport one way (fixed wing)
A0431	Ambulance service conventional air services transport one way (rotary wing)
A0435	Fixed wing air mileage per statute mile
A0436	Rotary wing air mileage per statute mile



RESPONSE TO AN INQUIRY REGARDING AIR AMBULANCE DATA FOR THE STATE OF MONTANA

Chart 2

Transactions for A0430, A0431, A0435, and A0436



Source: NCCI Medical Data Call, Service Year 2013. Region includes CO, ID, NE, NV, OR, SD, and UT. Countrywide includes data for the following states: AK, AL, AR, AZ, CO, CT, DC, FL, GA, HI, IA, IL, IN, KS, KY, LA, MD, ME, MO, MS, MT, NC, NE, NH, NM, NV, OK, OR, RI, SC, SD, TN, UT, VA, VT, and WV.

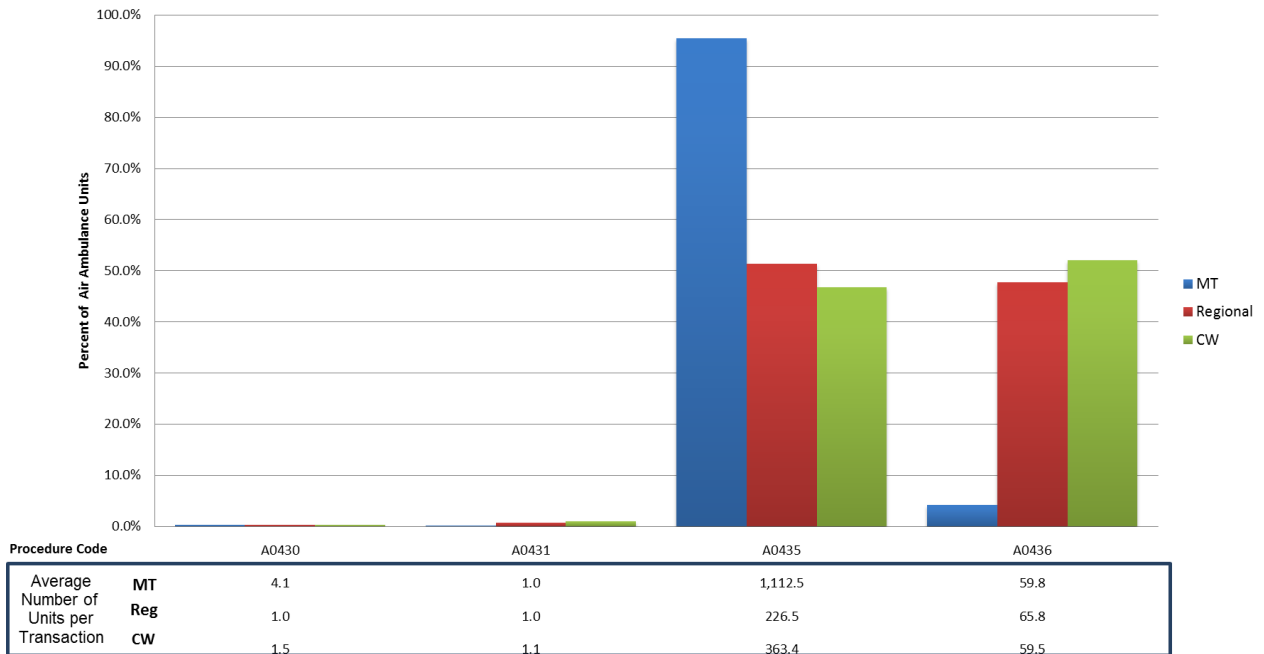
Code	Description
A0430	Ambulance service conventional air services transport one way (fixed wing)
A0431	Ambulance service conventional air services transport one way (rotary wing)
A0435	Fixed wing air mileage per statute mile
A0436	Rotary wing air mileage per statute mile



RESPONSE TO AN INQUIRY REGARDING AIR AMBULANCE DATA FOR THE STATE OF MONTANA

Chart 3

Units per Transaction for A0430, A0431, A0435, and A0436



Source: NCCI Medical Data Call, Service Year 2013. Region includes CO, ID, NE, NV, OR, SD, and UT. Countrywide includes data for the following states: AK, AL, AR, AZ, CO, CT, DC, FL, GA, HI, IA, IL, IN, KS, KY, LA, MD, ME, MO, MS, MT, NC, NE, NH, NM, NV, OK, OR, RI, SC, SD, TN, UT, VA, VT, and WV.

Code	Description
A0430	Ambulance service conventional air services transport one way (fixed wing)
A0431	Ambulance service conventional air services transport one way (rotary wing)
A0435	Fixed wing air mileage per statute mile
A0436	Rotary wing air mileage per statute mile